



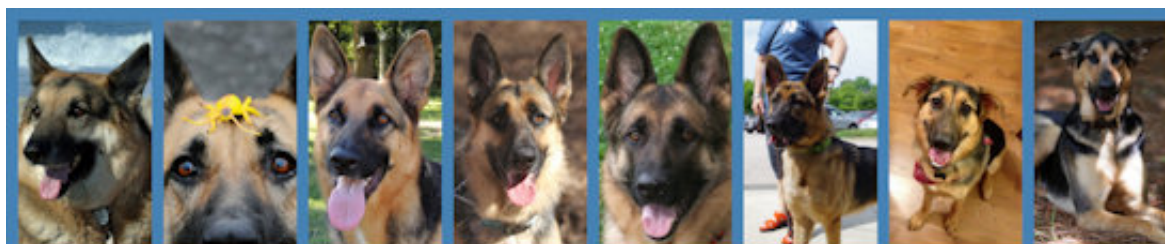
[Worldwide German Shepherd Directory](#) :: Your Favorite Site

German Shepherd Rescue and Adoptions

<http://www.gsdrescue.org/>

We adopt our GSDs to homes in North Carolina, South Carolina, and Virginia

Our Adoption Process Some people have said that our adoption process is as rigorous as that required to adopt a human child :) We've also been told that if we weren't quite so choosy that we could get more dogs adopted. Then there is the complaint that our screening process takes a long time to be completed. Guess what? All these things are TRUE! So if one or more of these aspects of our adoption process bother you, stop reading now and save yourself some frustration. Find another organization that's a little less picky, a little quicker on the approval process and motivated by the QUANTITY of adoptions, not the quality. If, however, you think like we do and believe that the adoption of a dog is a serious, emotional and long-term undertaking then you will do just fine :) Read on and get to know our adoption process - it will help to prepare you for what will undoubtedly be an amazing journey as you come to find your 4-legged companion! In brief, our adoption process is split up into 5 separate parts. Each part is explained in full below. *****STOP***** Before you fill out the application: 1) We do not adopt to individuals living outside of North Carolina, South Carolina, or Virginia. 2) If the only dog you are interested in has a (CL) after their name, this is a courtesy listing and we do not handle the adoptions of courtesy listings. Please contact the person directly. The Application Submission: The first step in adopting a dog from our rescue is to fill out an adoption application. As you will see, the application is long! It might seem tedious answering all those questions but believe us when we say that a comprehensively answered application really helps us get a feel for you and what kind of dog would suit you best. Be completely honest when you answer the questions. **THERE ARE NO RIGHT OR WRONG ANSWERS!!** We handle every application on its own merits and we understand that a great home for one of our dogs comes in all shapes, sizes and styles. The Vet Check: Once your application is submitted a volunteer from GSRA will contact your listed veterinarian reference and verify that all your pets have been listed on your application and that they are all up to date on vaccines, heartworm preventative and spayed/neutered. It's important for us to know that you have a good history of keeping your animals healthy (i.e. you didn't run out on the day you decided to adopt and got caught up on all those long, overdue vaccinations etc!). If we run into any problems at this step we will contact you to ask for clarification on anything that isn't clear to us. The Interview: Once the vet check is completed a GSRA volunteer will then contact you via e-mail or phone to schedule a time to discuss your application in depth and get to know you. As much as this is a chance for us to get to know you, it's also a great chance for you to get to know us: find out about our organization, ask any questions you have about the adoption process etc... Be prepared to spend at least 30 minutes chatting with the volunteer who contacts you. Choose a time when things are quiet and you have time to chat and think about things. Once again, we are not judging you on your answers to any questions we ask. The purpose of this interview is to get to know you. Just like the answers you put on your application, this interview will help us get a feel for the kind of dog that would fit well within your home. The Home Visit: Once we feel that you are a good candidate to adopt we will schedule a home visit which will most likely be done by a different volunteer. Please don't stress, we aren't looking for pristine homes, we just want to make sure you have and can provide a safe environment for one of our dogs. If your home visit goes well we will let you know that you are approved to adopt and we will start helping you look for the perfect dog. Even if you would like to adopt from us in the near future we encourage you to go through the process and get approved, this way when you are ready or a particular dog "hits" you there won't be a time delay in getting you approved and matched up with a dog. One note, if you are moving to a new location in the next month or so we will most likely wait to do your home visit until you've moved to the new location. The Matchmaking: Once approved, the volunteer handling your application will work on putting you in contact with the foster home of the dog (s) in which you are interested to talk. At this point in the process, you are approved to adopt from GSRA, but you still need to work with the foster parents of your desired dog to see whether or not you are approved to adopt their foster dog. Please understand that we leave the decision of who adopts each dog solely up to the foster home since they know the dog best and should have the best feel for what home the dog will fit in best. We do not have the philosophy of "first come first serve", we are looking for a great/perfect match since these dogs have already been given up by their owners once if not more and we would like this to be the forever home. The only time being the first interested adopter comes into play is if there are 2 or more applicants that are considered "perfect matches" for a dog. In that case the first person contacting the foster home may be chosen but again, it is completely up to the foster home who and how they choose the best home. If you are not chosen for a particular dog please don't be discouraged, it does not mean that you are a bad home in any way, it just means that the foster believes the dog would be a better fit in a different home. The Trial & Adoption: Once you find a dog, you will take him/her on trial for one to two weeks. If, after the trial period is over, you decide you want to add the dog to your family, we will cash your \$250.00 adoption fee check. If, for whatever reason, the adoption does not work out, we will return your check.



German Shepherd Rescue & Adoptions

Date created: 12/04/2012